



Tiny Heirloom Dress

This little dress features a classic yoke style bodice and a very full skirt. It is sized to fit 10 - 11" girl dolls (like Tonner's Ann Estelle and Kish's Bitty Bethany), but makes a great decorative accent on a miniature hanger or dress form.



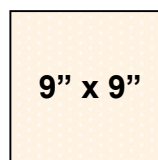
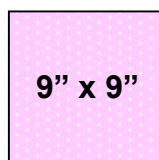
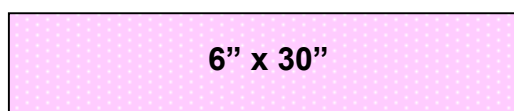
Materials:

- 1/4 yard fashion fabric - choose a soft woven fabric like quilter's cotton, muslin, gingham, or batiste
- 1/4 yard (or a 9" square scrap) of lining fabric - use something sheer and light like muslin or batiste
- Fabric marking pen or pencil
- Embroidery needle and floss (I used peach, white, and light green)
- Small snaps

Cutting:

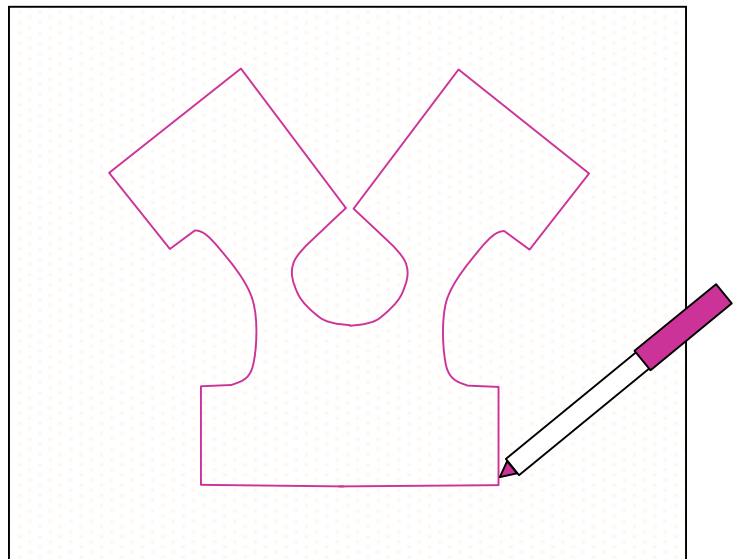
From the fashion fabric: Cut a 6" x 30" strip for the skirt and a 9" square for the bodice.

From the lining fabric: Cut a 9" square for the bodice.

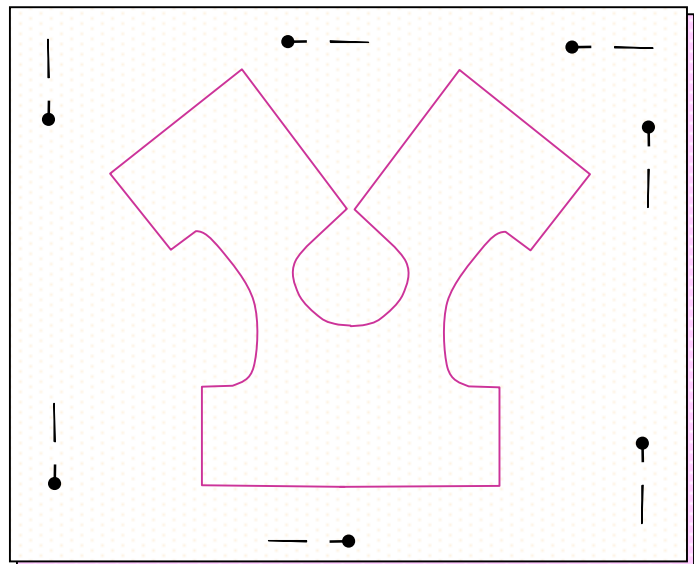


Assembly Instructions

Print the bodice template on page 7. Make sure the square measures 1". Trace the outline of the bodice onto the wrong side of the lining fabric square.

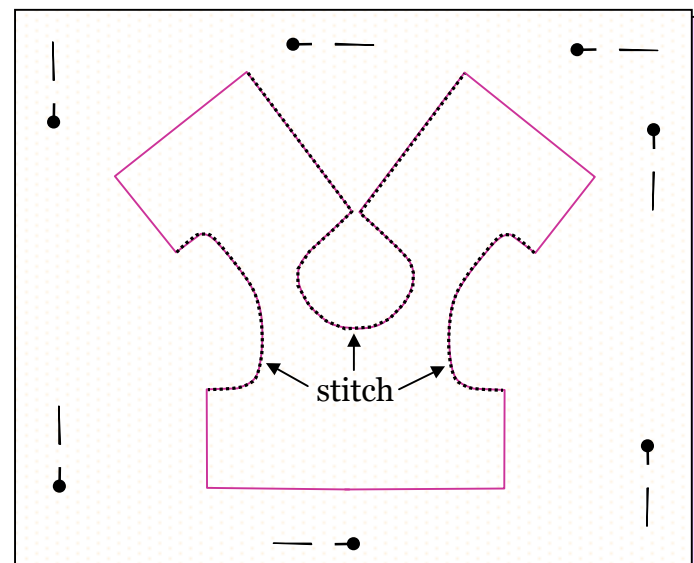


Place the fashion fabric square behind the lining square, right sides facing. Pin together near the edges.

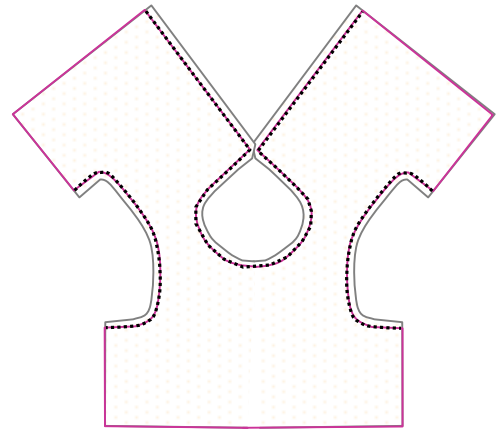


Using tight, tiny stitches, stitch right over the marking at the back/neckline opening and both the armhole openings.

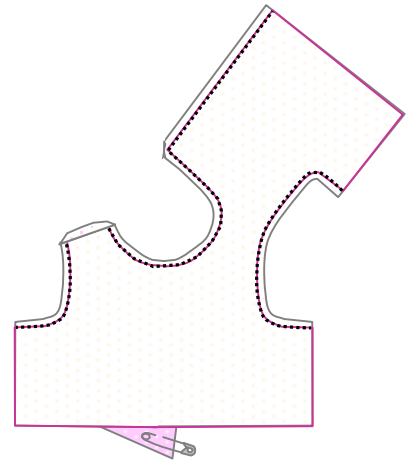
Leave the bottom and side edges unstitched at this point.



Cut both layers of fabric about 1/8" from the stitched edges, leaving the equivalent of a tiny seam allowance. Cut right along the lines at the unstitched edges.



Use a small safety pin to draw the fabric through the layers at the shoulder openings, turning the bodice right side out.



Work the stitched edges between your fingers to fully roll out the seams. Press.



Now for the fun part...embroidery!

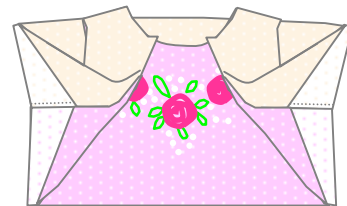
Note: Be sure to stitch only the fashion fabric layer so the backs of the stitches and knots will be hidden by the lining layer.



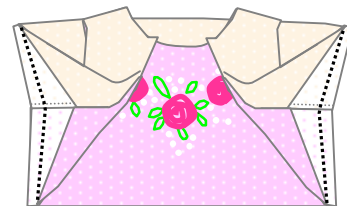
Pull the lining layer away from the fashion fabric layer at the side edges.



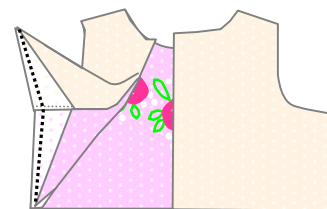
With the layers apart and the right sides facing, match the side edges. Make sure the armhole seams and bottom corners are in line.



Stitch $\frac{1}{4}$ " from the aligned edges.

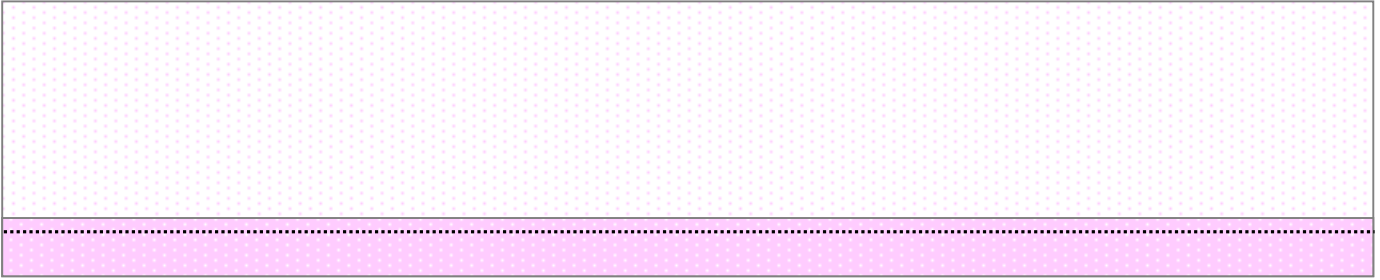


Trim the seam allowances down to $\frac{1}{8}$ " and refold the bodice at the side seams.

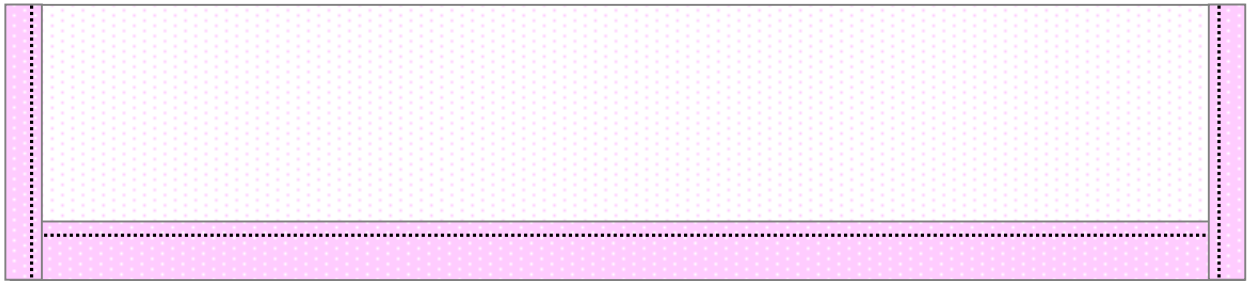


Turn the completed bodice right side out and set aside.

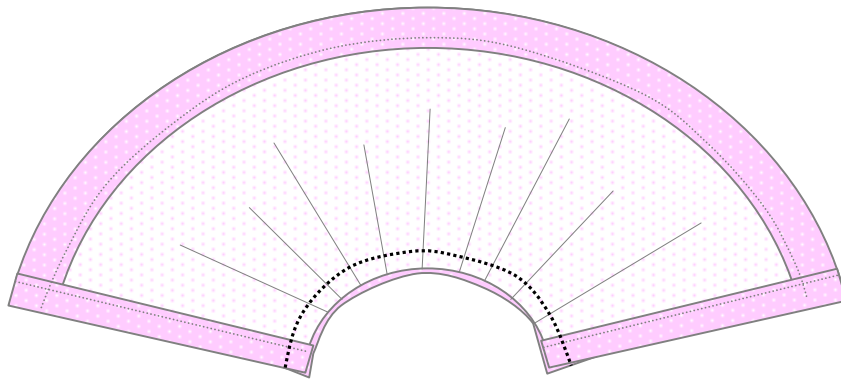




Fold long bottom edge of the skirt strip over $\frac{1}{2}$ " to the wrong side. Make a second fold 1 " from the first. Edgestitch into place, $\frac{1}{8}$ " from the first fold.

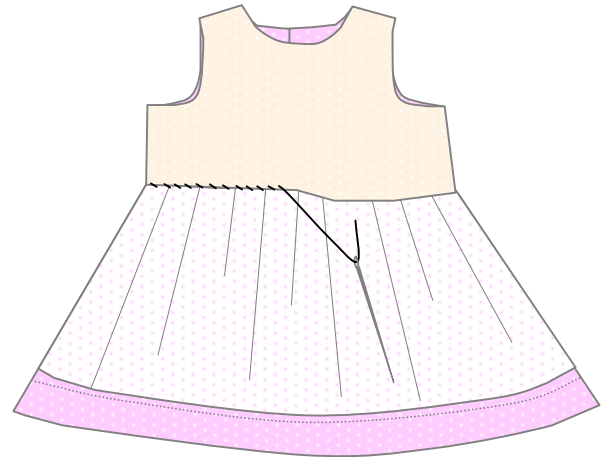


Fold the short side edges over $\frac{1}{2}$ " to the wrong side. Make a second $\frac{1}{2}$ " fold on each side. Edgestitch into place.



Run a row of basting stitches $\frac{1}{8}$ " from the top raw edge. Run a second row of basting stitches $\frac{1}{2}$ " from the edge. Gather the skirt to the length of the bottom edge of the bodice. With the right sides facing, align the top edge of the skirt with the bottom edge of the fashion fabric bodice layer and pin. Make sure the lining is pulled out of the way at this point. Stitch $\frac{1}{4}$ " from the aligned edges.

Fold the raw edge of the lining under 1/4" and hand stitch into place at the position of the skirt seam.

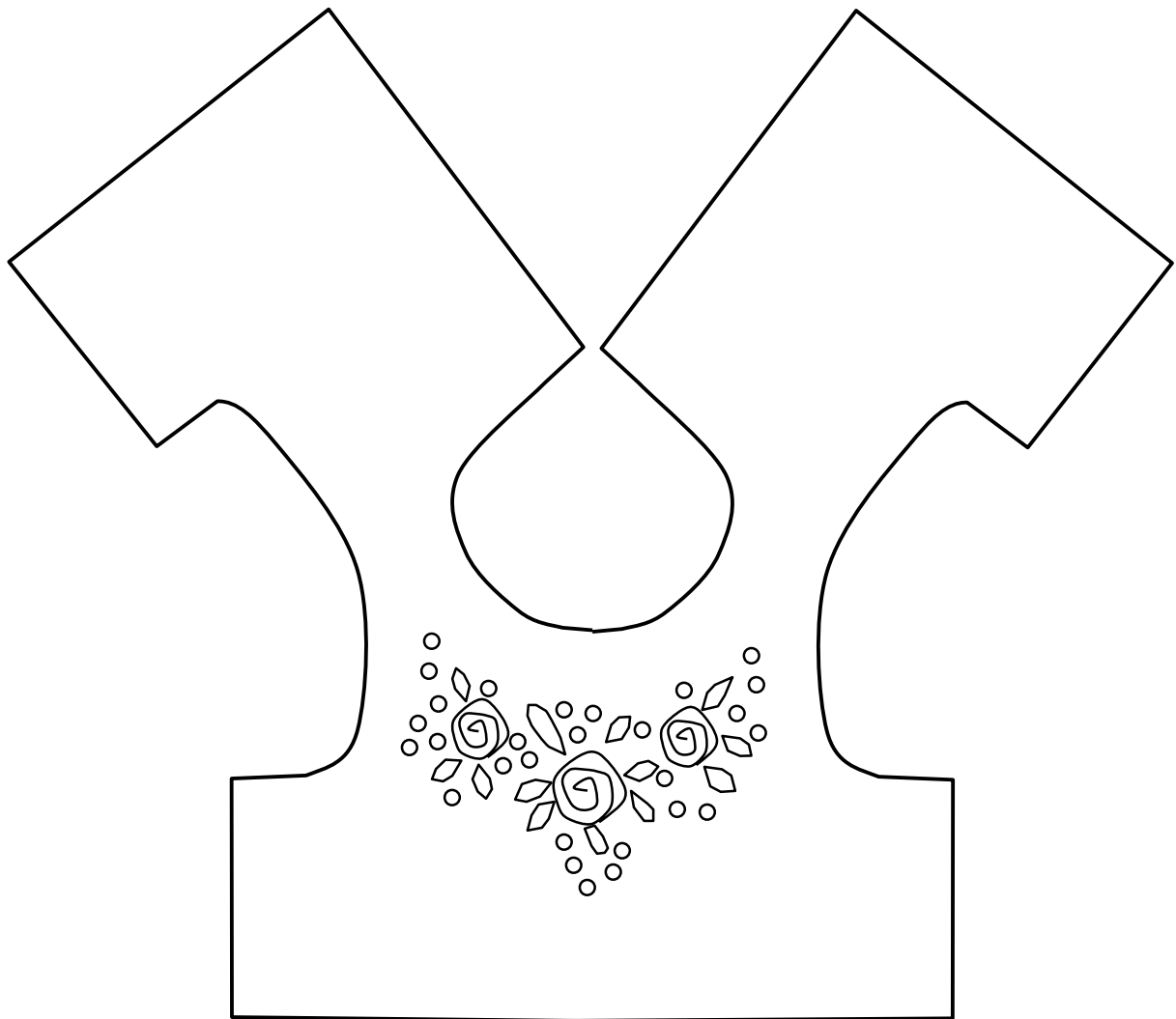


The back edges will overlap by 1/2". Sew snaps into place at the desired positions along the bodice and skirt.

Your little dress is finished!



1"



Bodice template

